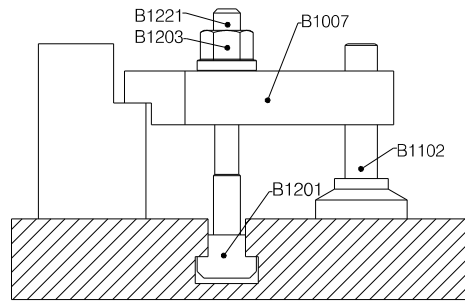
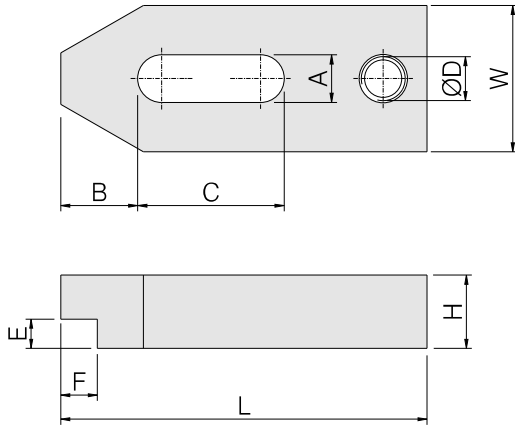


B1007 - Stepped Clamp

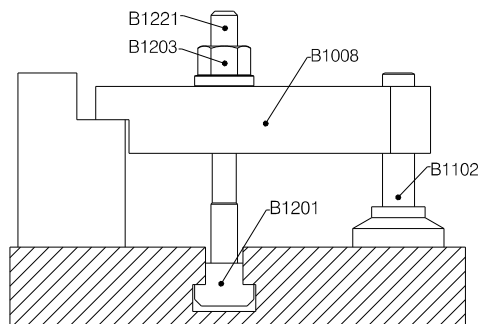
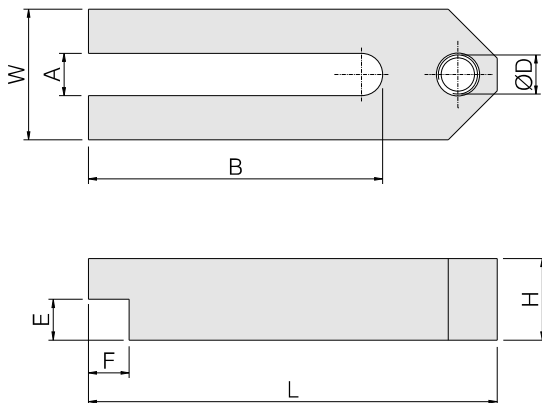
- ▶ Tempered steel
- ▶ Blackened



Part No.	A	L	For clamping screw	W	H	ØD	B	C	E	F	Weight (Kg)
B1007-12-100	13	100	M12	38	22	M12	21	40	8	10	0.78
B1007-16-125	17	125	M16	48	24	M16	26	45	10	12.5	0.95
B1007-20-160	21	160	M20	60	30	M20	30	60	12	15	1.73

B1008 – Stepped Clamp

- ▶ Tempered steel
- ▶ Blackened



Part No.	A	L	For clamping screw	W	H	ØD	B	E	F	Weight (Kg)
B1008-12-125	13	125	M12	38	24	M12	90	12.5	12.5	0.66
B1008-16-160	17	160	M16	48	30	M16	110	15	15	1.3
B1008-20-200	21	200	M20	60	38	M20	135	20	20	2.56